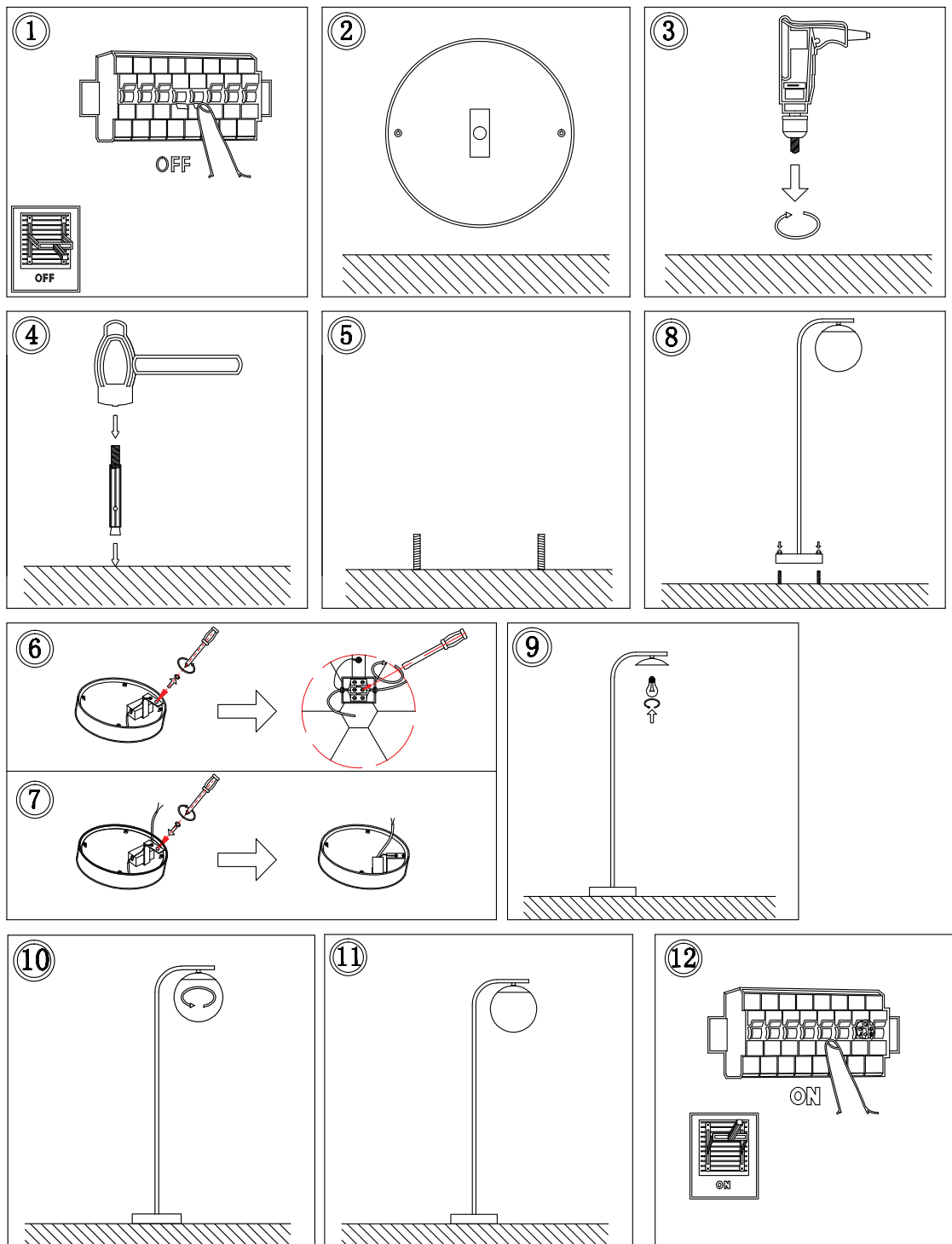


This marking indicates that this product should not be disposed of with other household wastes.

Caution, risk of electric shock.

## INSTALLATION DIAGRAM



### INSTALLATION INSTRUCTION

1. Turn off the power.
2. Mark drilling area with 135mm gap.
3. Drill the holes in the ground.
4. Dig the plastic into the hole.
5. Fix the screws in the holes.
6. Tighten the stand parts
7. Open the lamp to install the bulb.
8. Install the bulb on the holder.
9. Connect supply leads with terminal brown (L) to brown, blue (N) to blue and greenish-yellow ( ) to greenish-yellow.
10. Tighten the screws to fix the wires.
11. Tighten the nuts to fix down the stand.
12. Check whole fitting is correct.
13. Turn on the Power